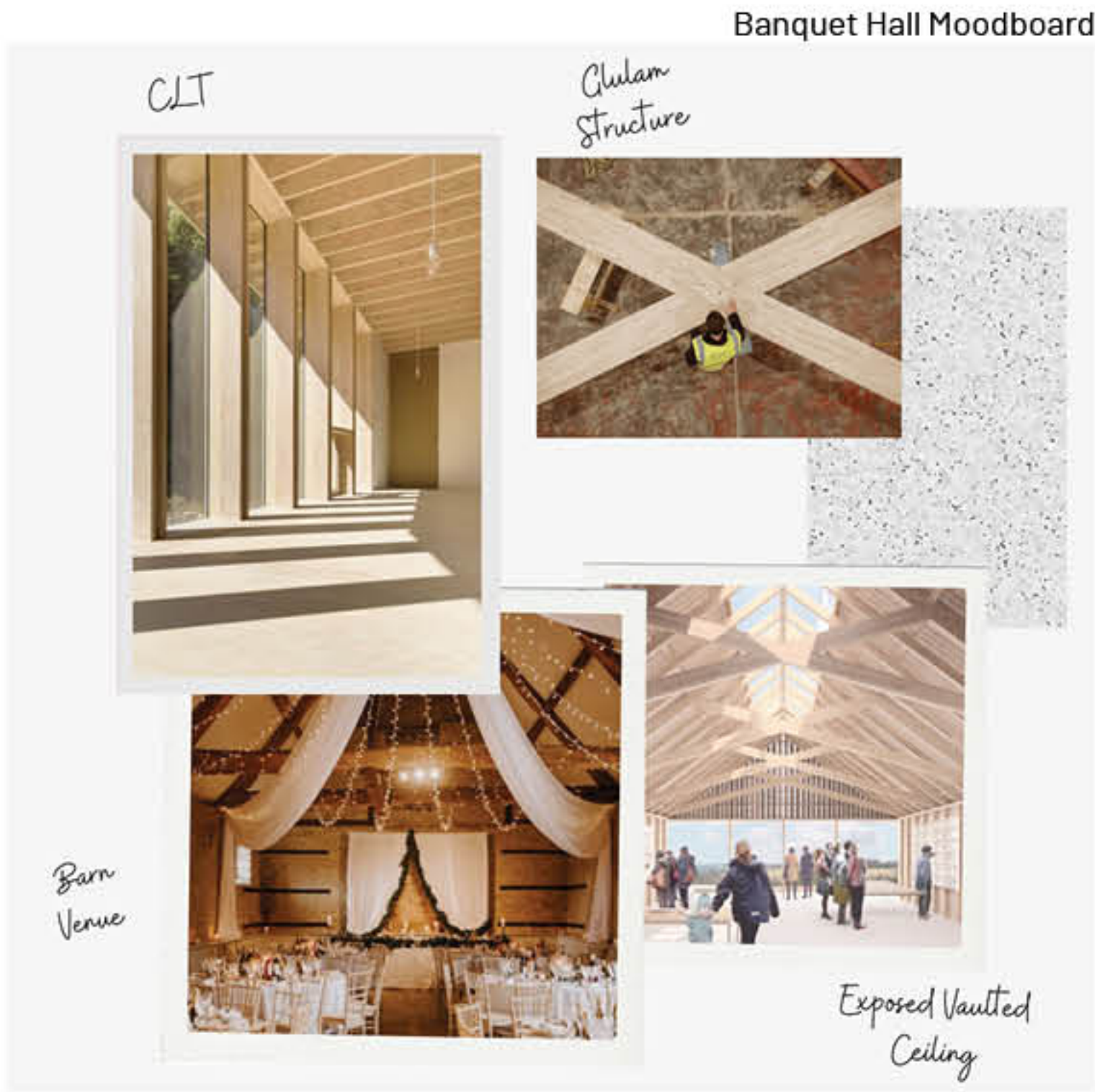




Structure Visualisation



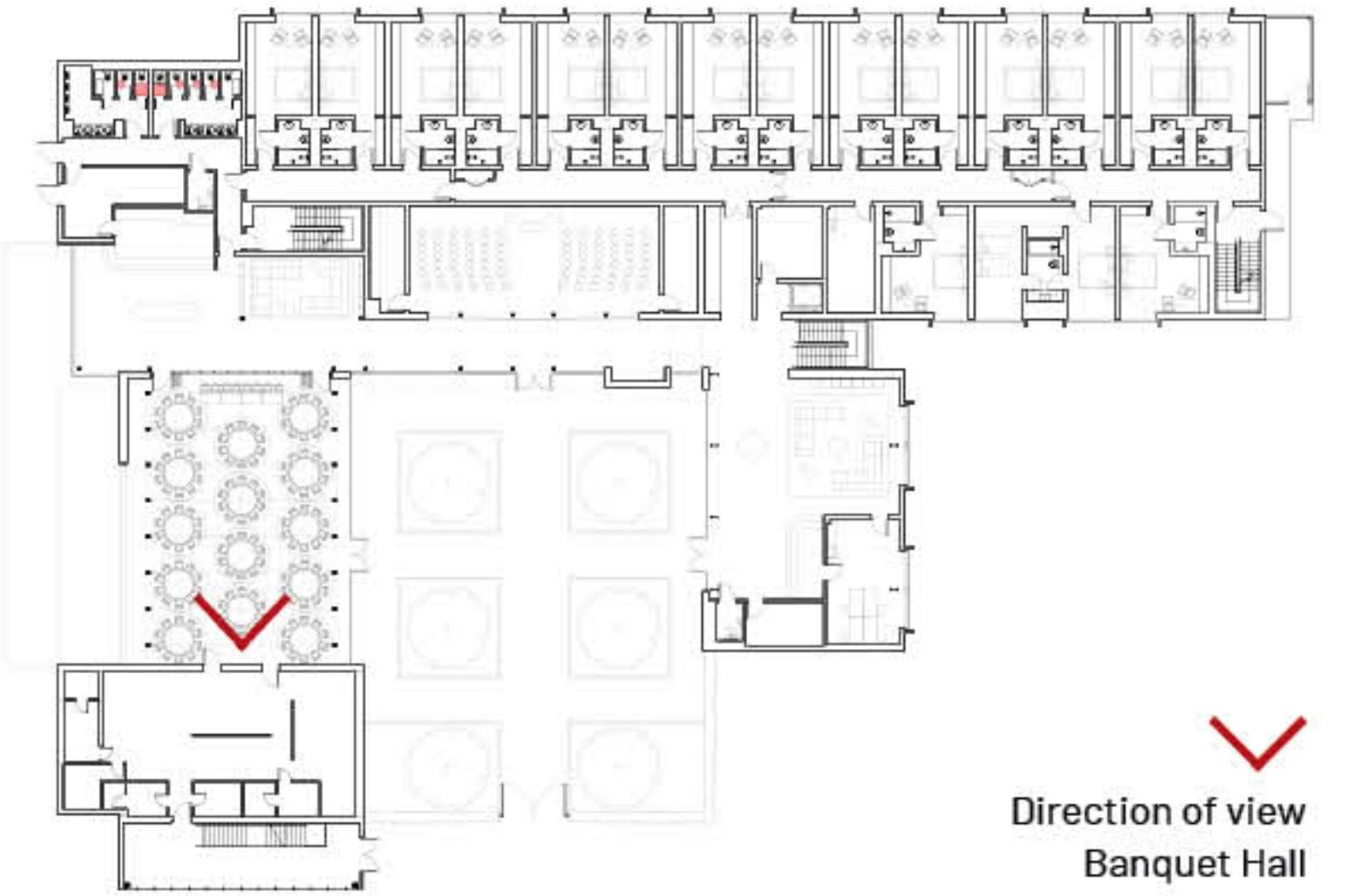
Banquet Hall Moodboard



Hall Visualisation

Venue Interior - Banquet Hall

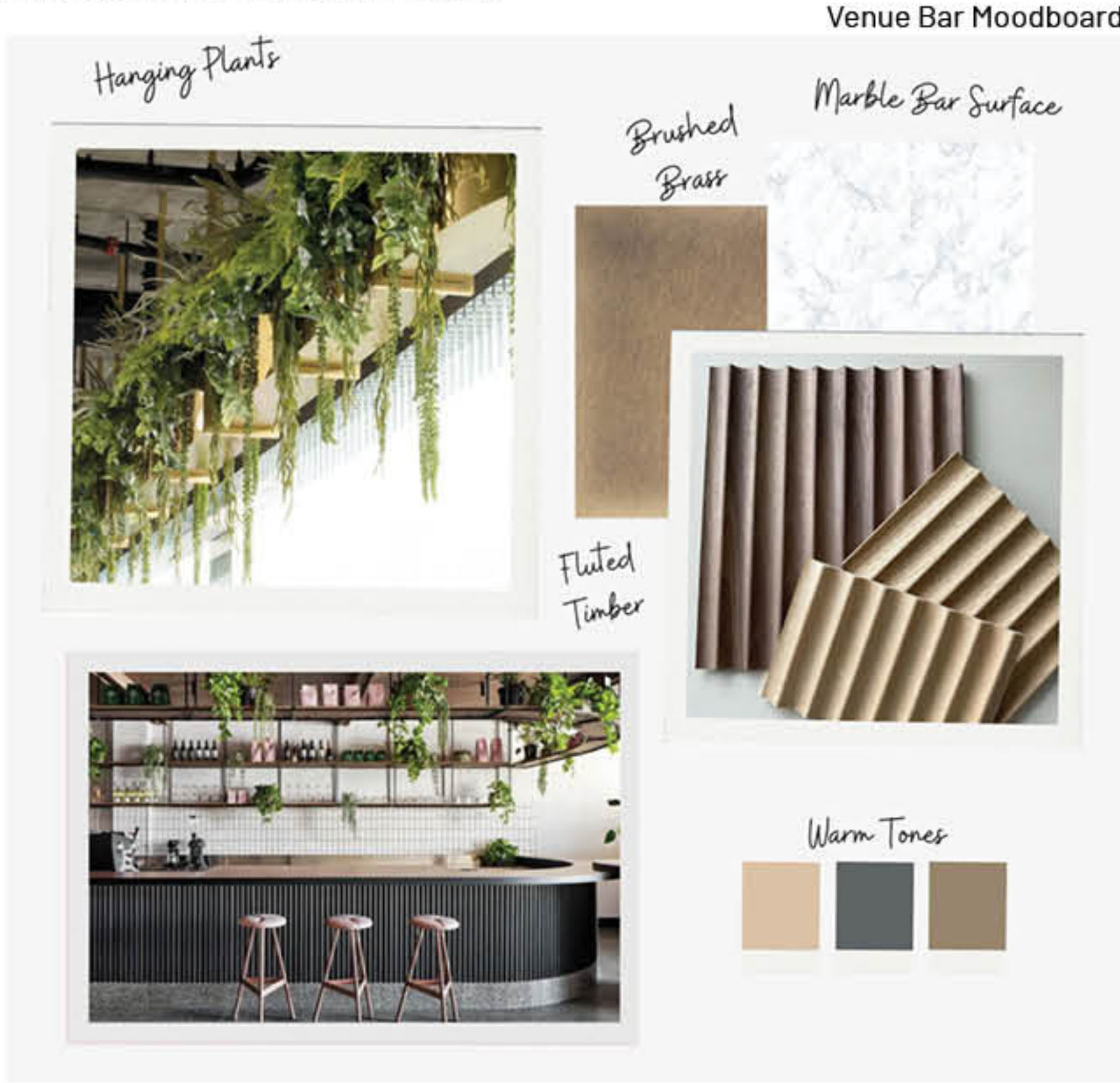
The Banquet Hall is a large vaulted space synonymous with wedding halls. We are in discussions with the Structural Engineer on how best to create dynamic cross bracing to create a dramatic space that will create an appealing hall for prospective guests. The north-facing gable end has a vaulted window with brise soleil to allow natural light into the hall. This space will include audio/visual requirements to ensure the hall is flexible for a number of uses.



Direction of view
Banquet Hall



Folding Wall from Banquet Hall to Bar



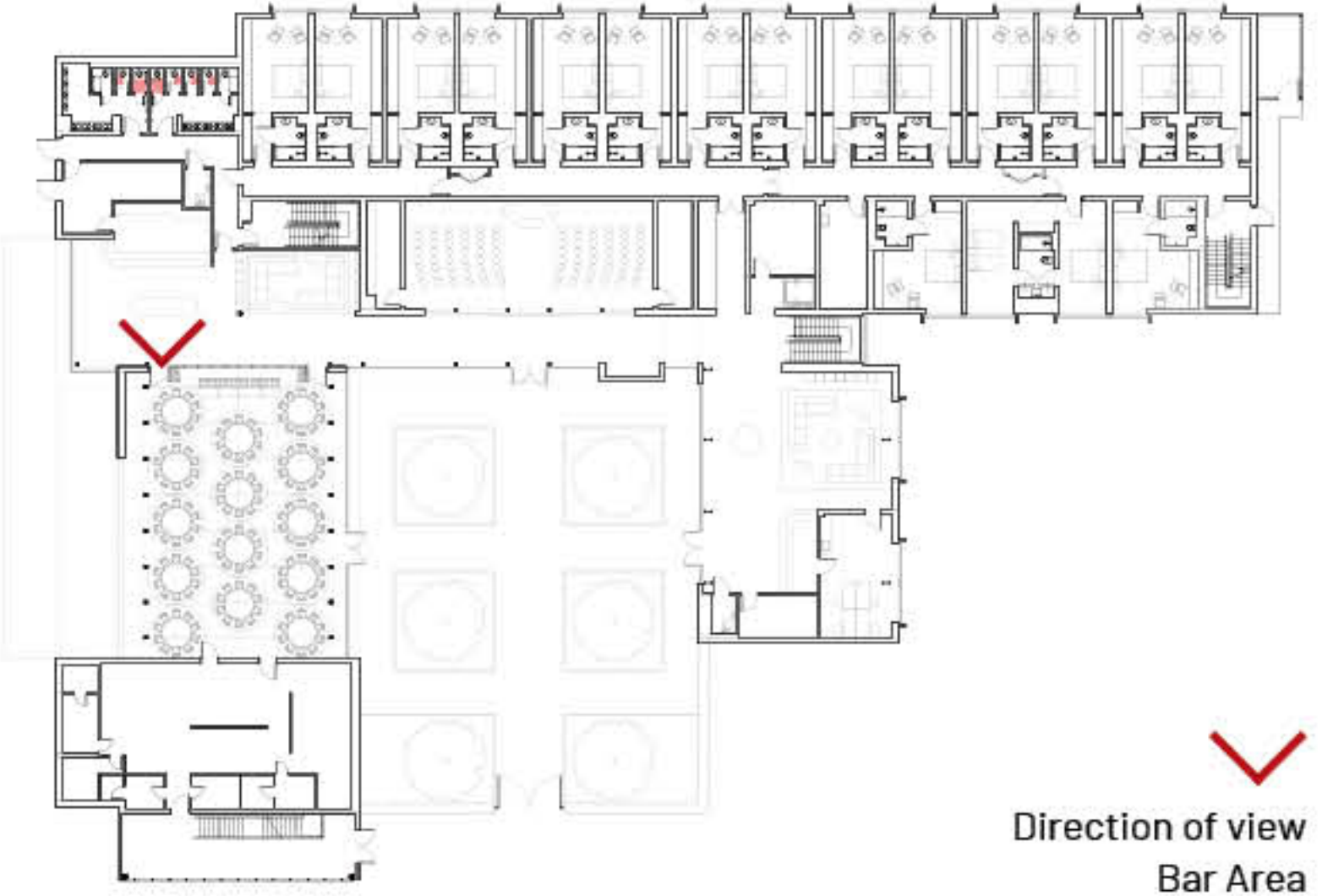
Venue Bar Moodboard



Bar Internal Visualisation

Venue Interior - Bar

The bar area incorporates the external materiality of the building, with both the brick and timber shingle running into the internal finishes. This will have the added benefit of a seamless inside/outside space when the large sliding glazing is fully open during the peak summer months. High-quality contemporary joinery is proposed to the bar and hanging planting will frame the area. The scheme also has lounge seating which has been designed to provide an area for guests to rest during the day.

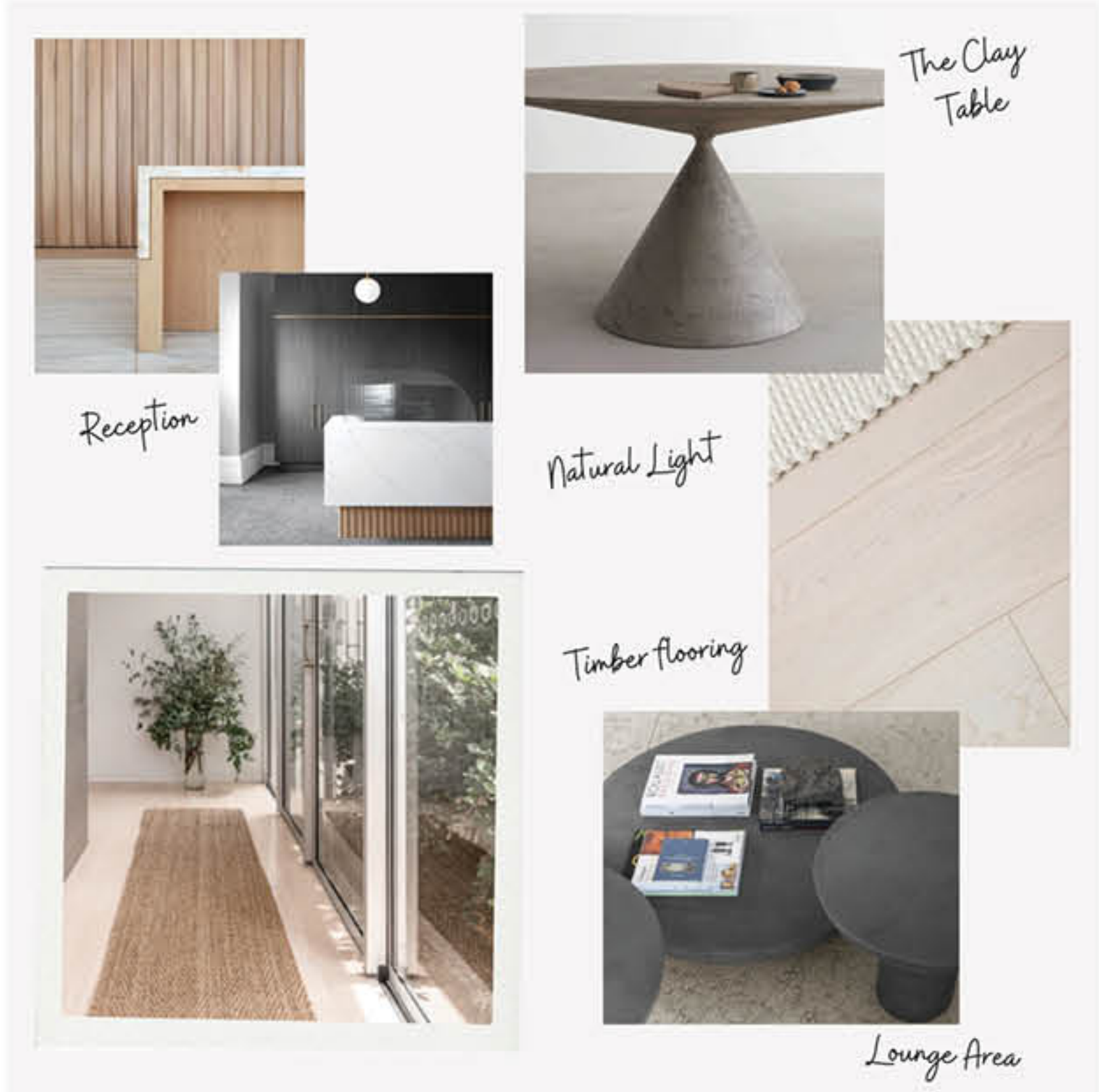


Direction of view
Bar Area



Stair and Reception Visualisation

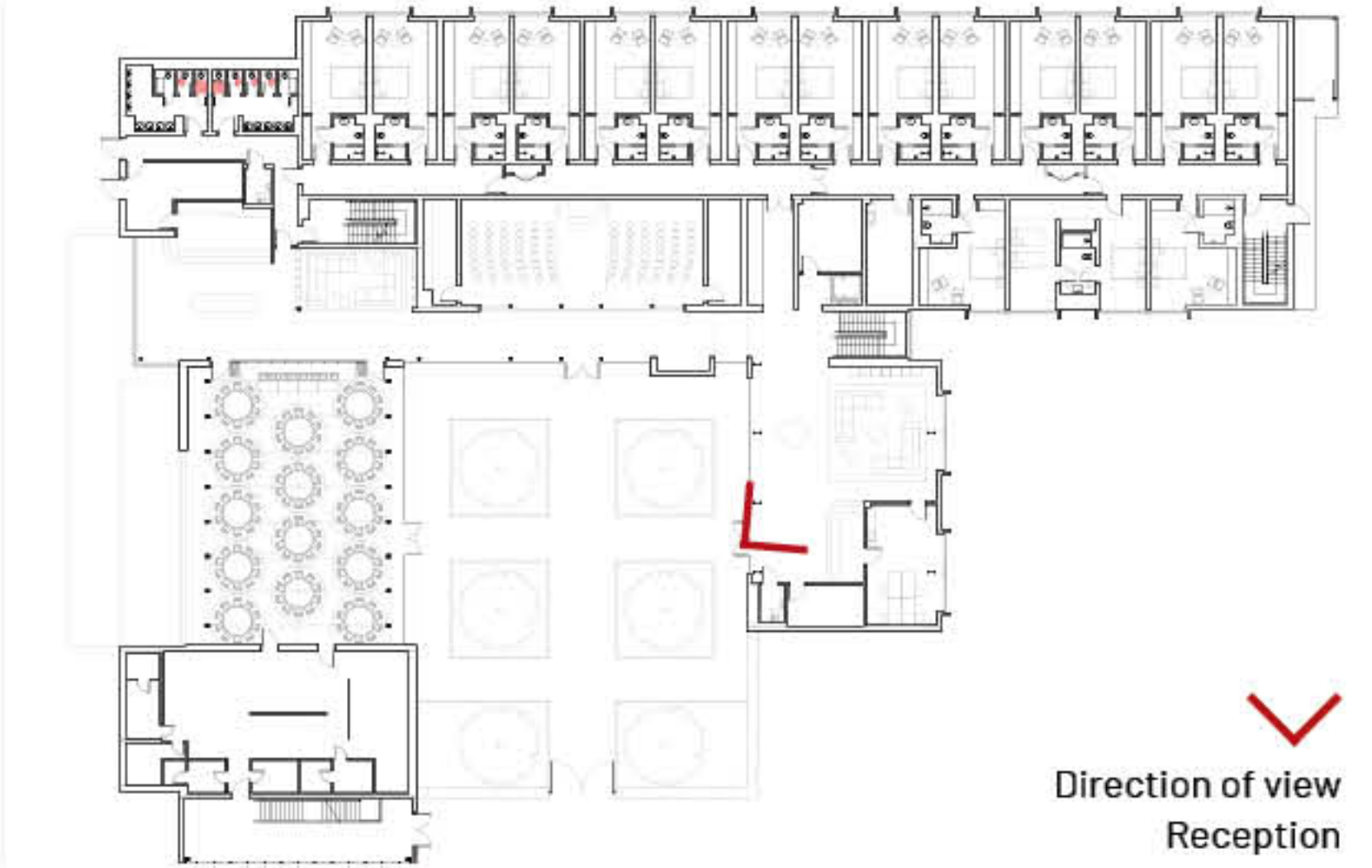
Reception Moodboard



Reception Visualisation

Venue Interior - Reception

The reception area is where most guests will be greeted by the hotel staff upon arrival. The reception lounge has a dedicated cloakroom room and toilet, with a waiting area where guests can grab a drink before checking in. The space has high-end finishes which will give a warm welcome to a prospective couple, with a short route to the bridal suite if they are viewing. The lounge will also provide a suitable place to meet with prospective brides to discuss options for the big day following a tour around the venue.





Bar External Visualisation



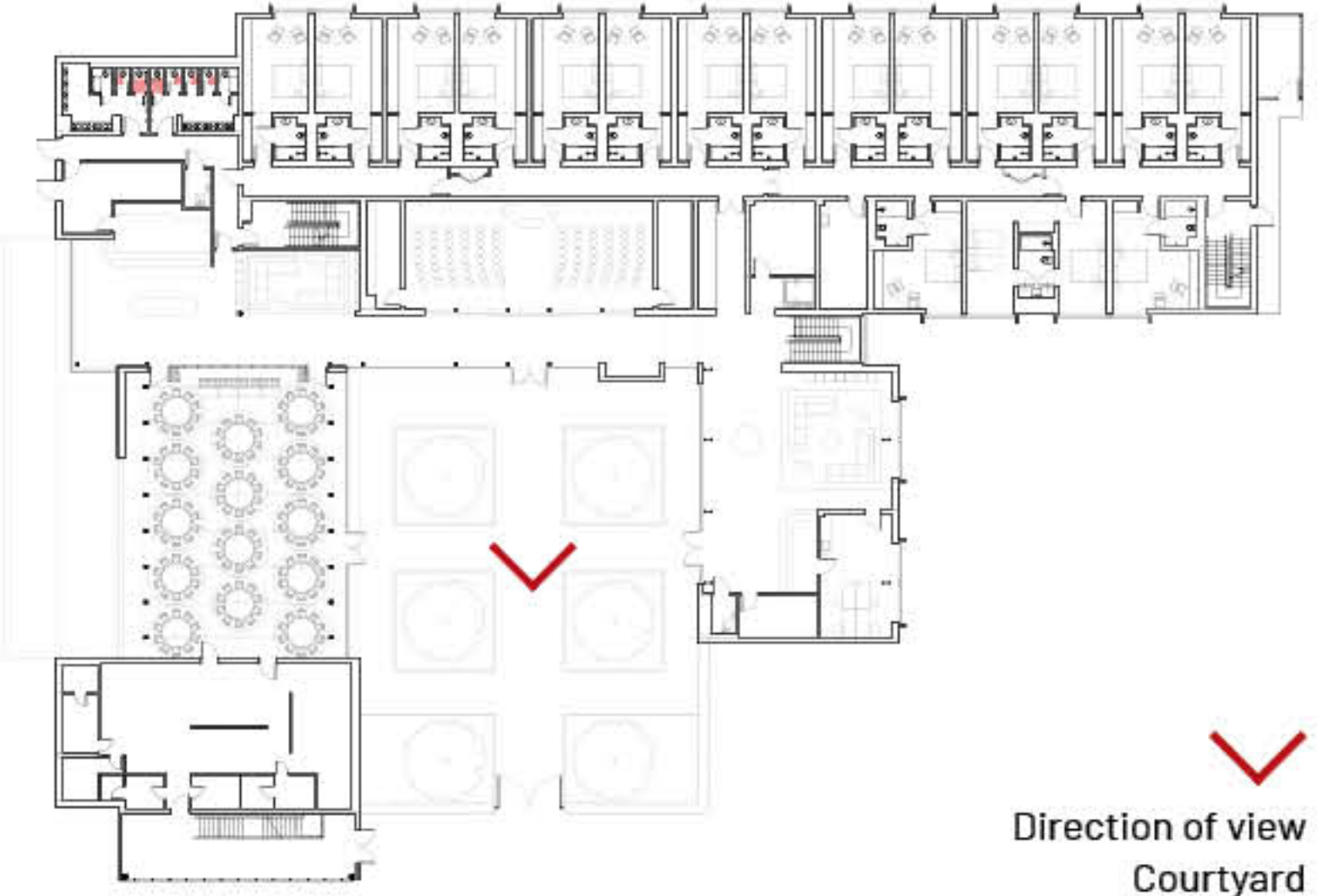
External Materials Moodboard



External Courtyard Visualisation

External Materials

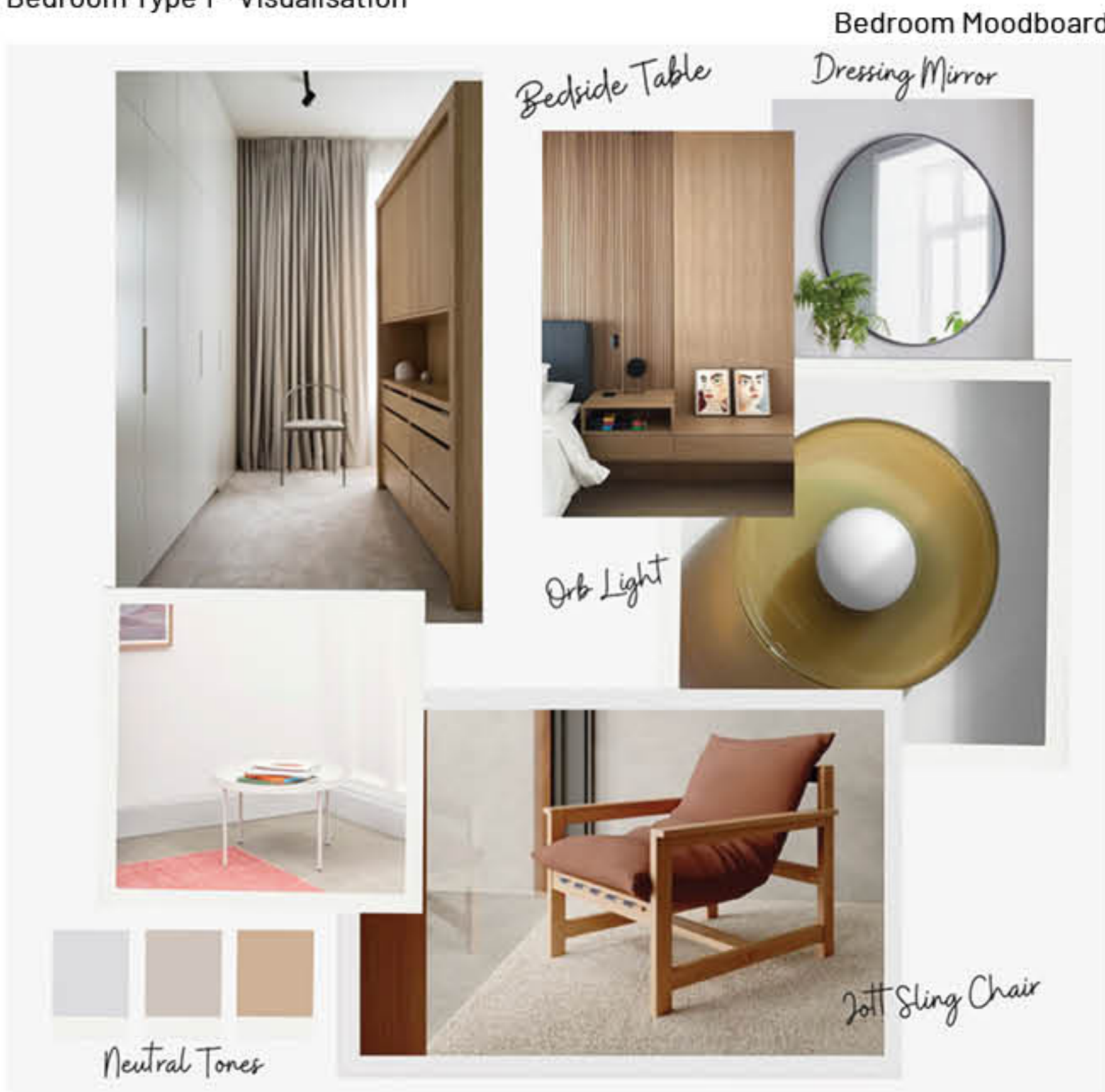
All materials noted above have been carefully selected to tie in with the ‘farmstead’ feel that informed the design of the Venue Building and the natural properties of brick and timber. The external material palette consists of 4 main elements. The Hotel is primarily clad in charred timber and the roof is standing seam zinc. The Banquet Hall contrasts this by using timber shingles which will weather into the surrounding landscape features. The single-storey circulation areas and Bar will be constructed in buff brick which will also be incorporated into the Clubhouse to ensure continuity across the schemes.



Direction of view
Courtyard



Bedroom Type 1 - Visualisation



Bedroom Type 1 - Visualisation

Hotel Interior - Bedroom Type 1

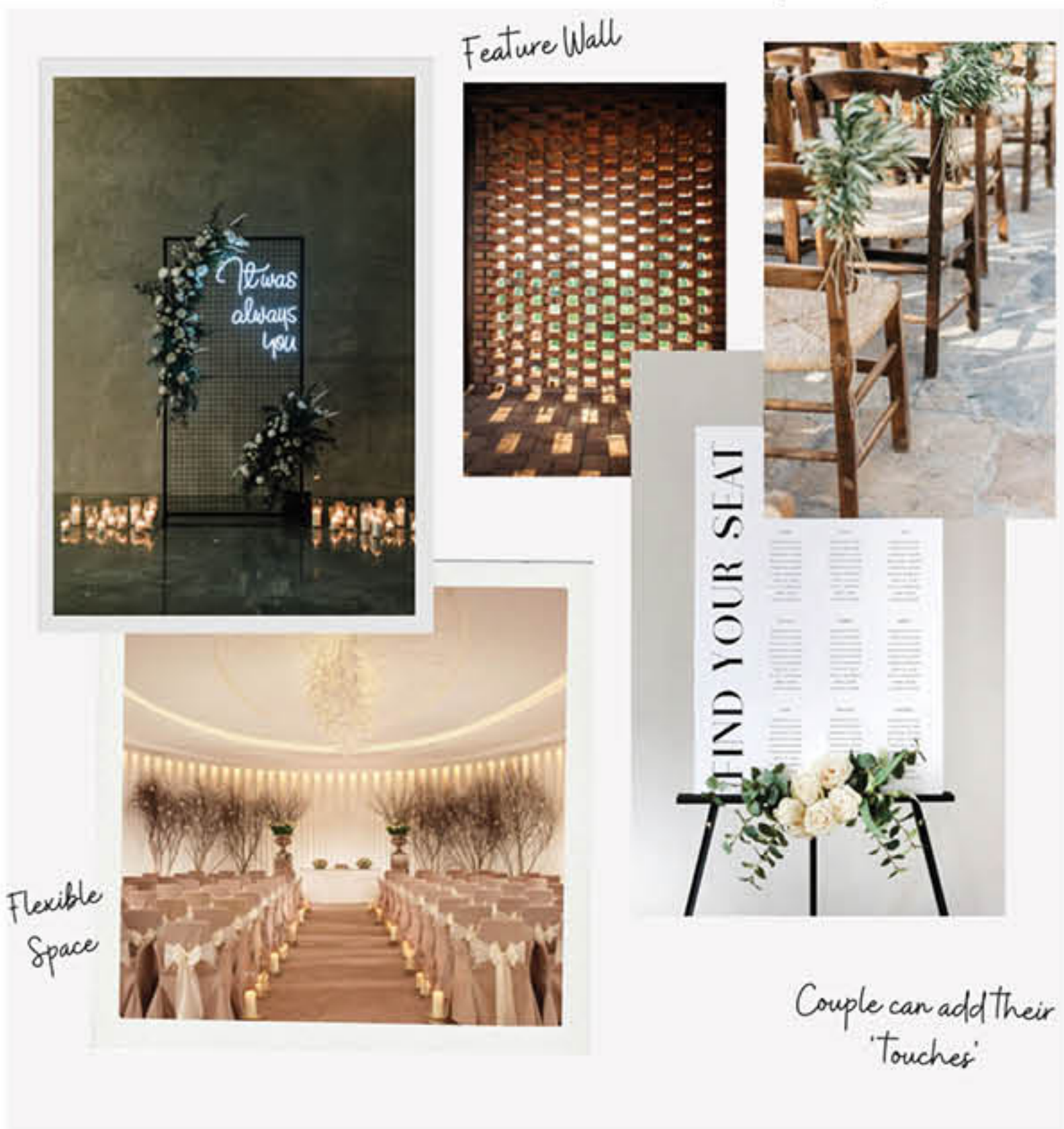
The main hotel bedroom is furnished to a very high standard with built-in wardrobes and a bespoke timber fluted headboard that provides a feature that is synonymous with the Hotel. The rooms will feel extra spacious given the large floor-to-ceiling heights. Each room has a mini bar, TV, dressing table and king-sized beds. Muted colour tones provide a simple and contemporary feel to these rooms, which we believe guests will love.



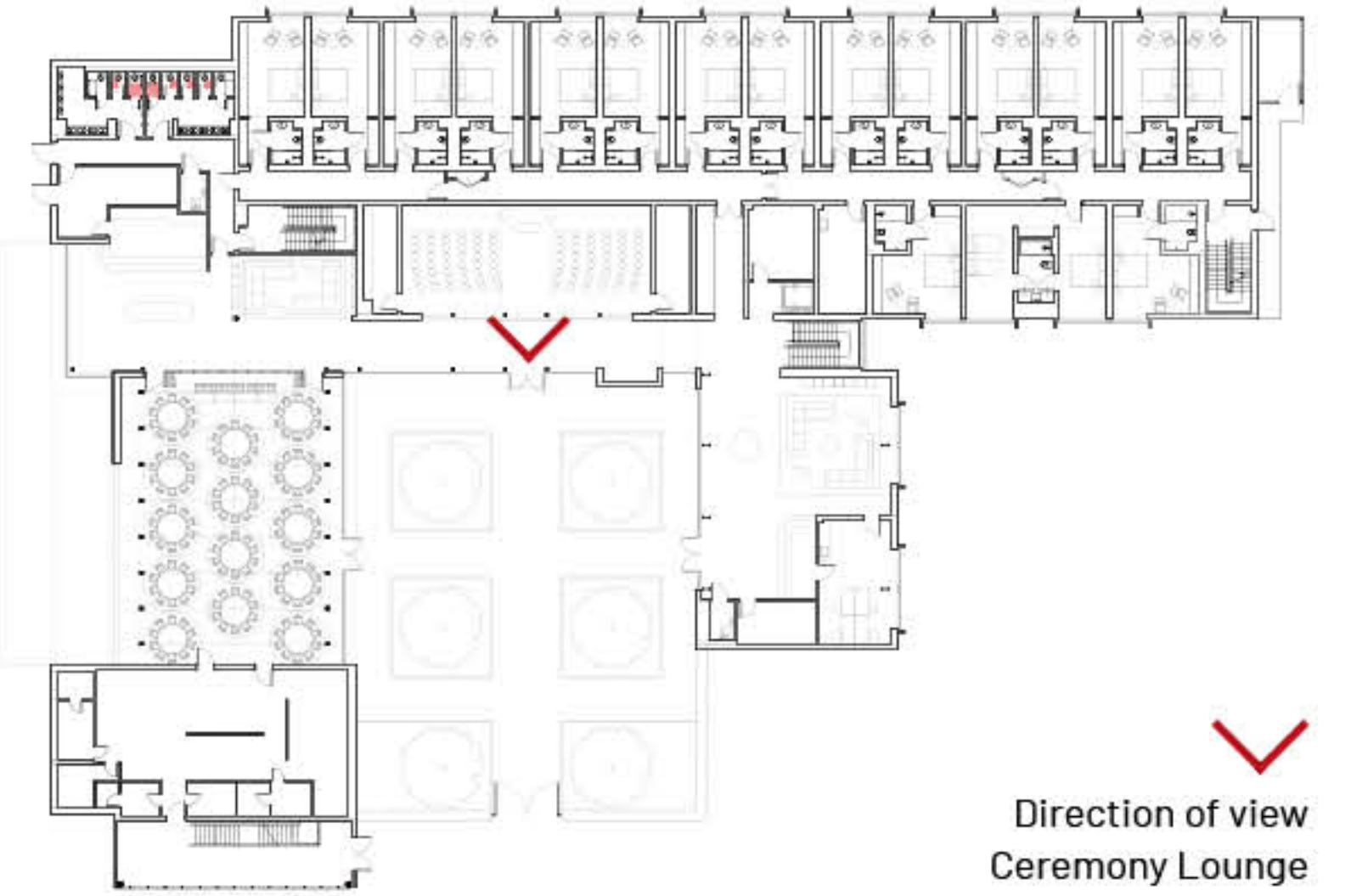


Ceremony Space Visualisation

Ceremony Lounge Moodboard



Ceremony Visualisation



Venue Interior - Ceremony Lounge

The Ceremony Lounge has been designed to provide flexibility and a blank canvas for any type of event. The inclusion of audio visual equipment and adjustable decor means it can be used for smaller functions and even business conferences. Behind the curtains are store rooms for furniture and blank walls for screens/projectors.



Bridal Suite - Visualisation

Bridal Suite Moodboard



Bridal Suite - Visualisation

Hotel Interior - Bridal Suite

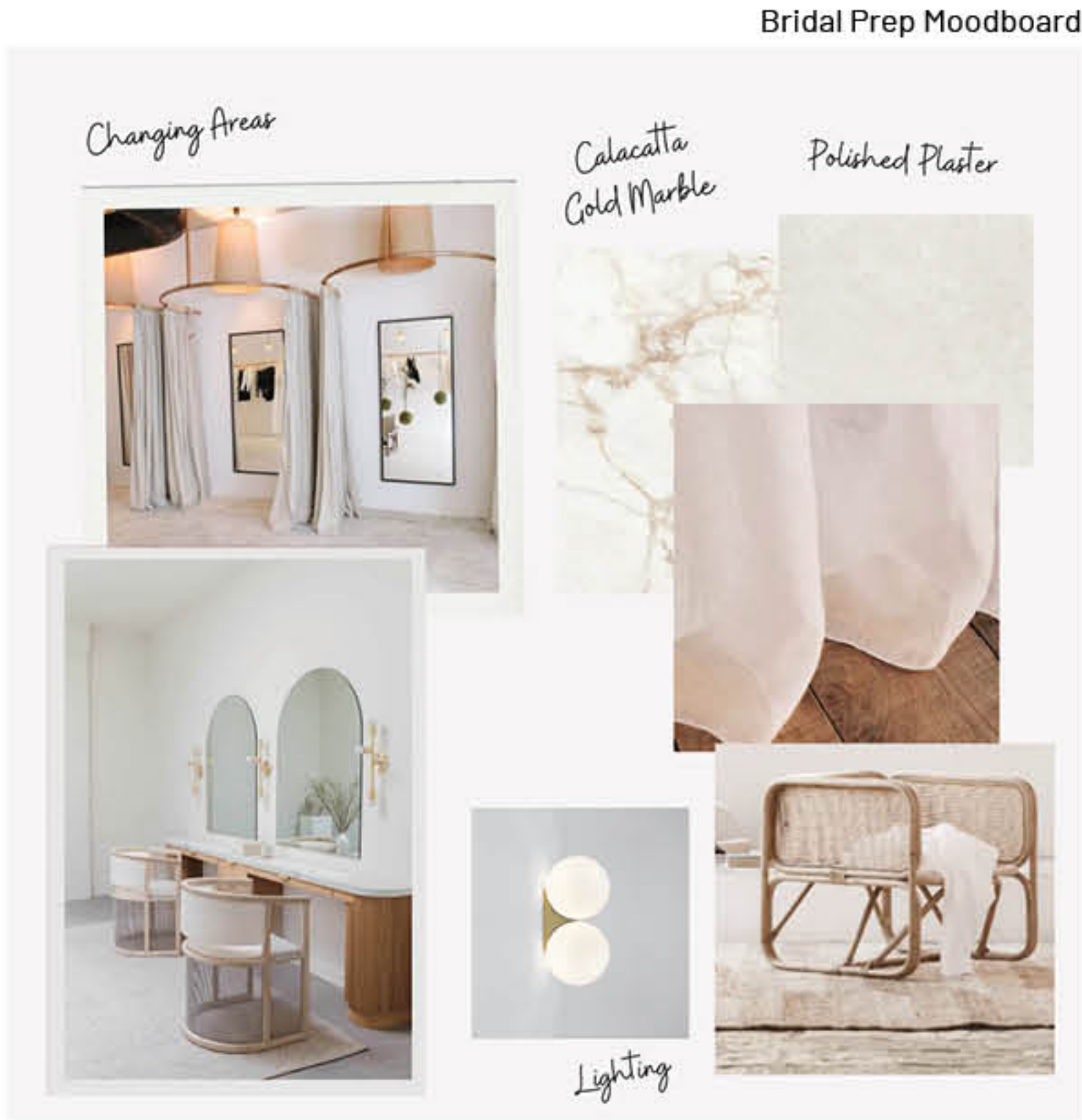
This room will ensure the Bride and Groom feel extra special and, better still, is only a short walk down to the reception area. The Bridal Suite itself is serene and flooded with light. The four-poster bed, the standalone bath and its natural accents gives the room a sense of tranquillity, perfect for the night before your big day. The bathroom is equally luxurious, adorned in large ceramic tiles, with a dramatic double shower.



Direction of view
Bridal Suite



Bridal Prep - Visualisation



Hotel Interior - Bridal Prep

This is a dedicated space for the bridal party to prepare on the morning of the big day. With large full-height mirrors, the Bride and her Bridesmaids can have their hair and make-up done in the company of each other. This large vaulted space will give guests an area to relax and enjoy a morning coffee before getting ready for their big day. Then, later toast to the day's events before walking down the aisle. We understand that lighting is key in such a space and full height glazing provides views out and wonderful natural light.



Bridal Prep - Visualisation



Direction of view
Bridal Prep